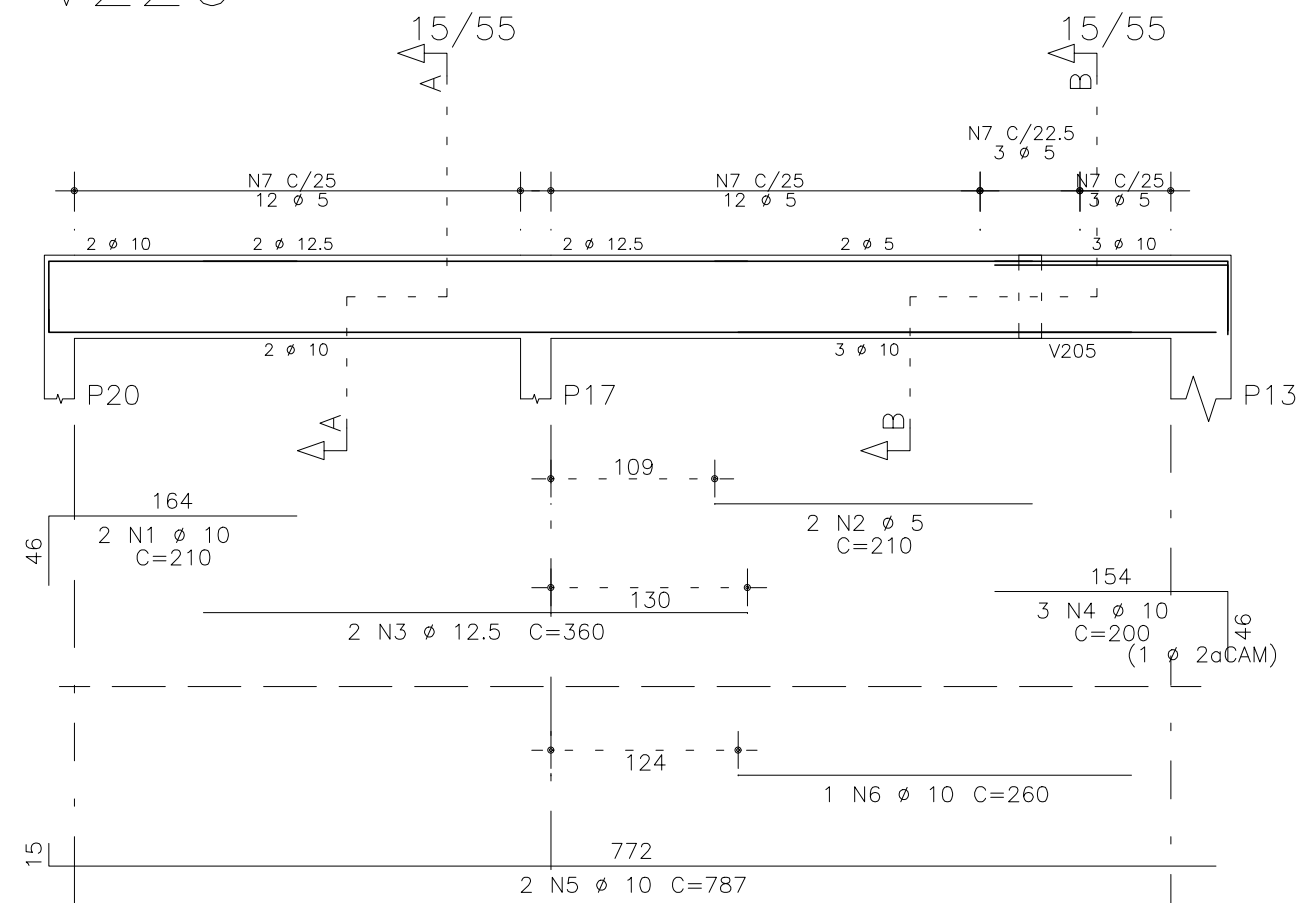


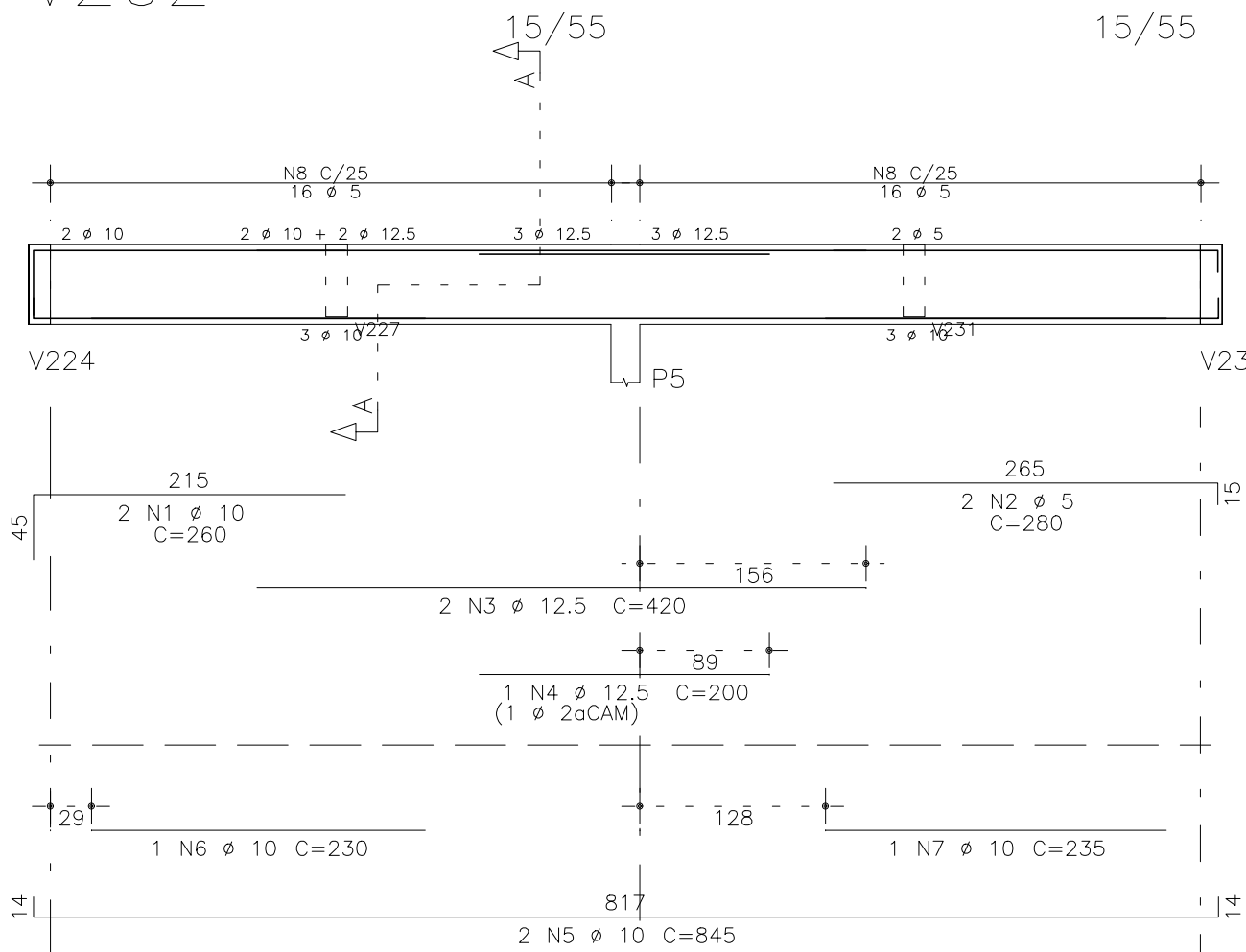
V226



Corte A

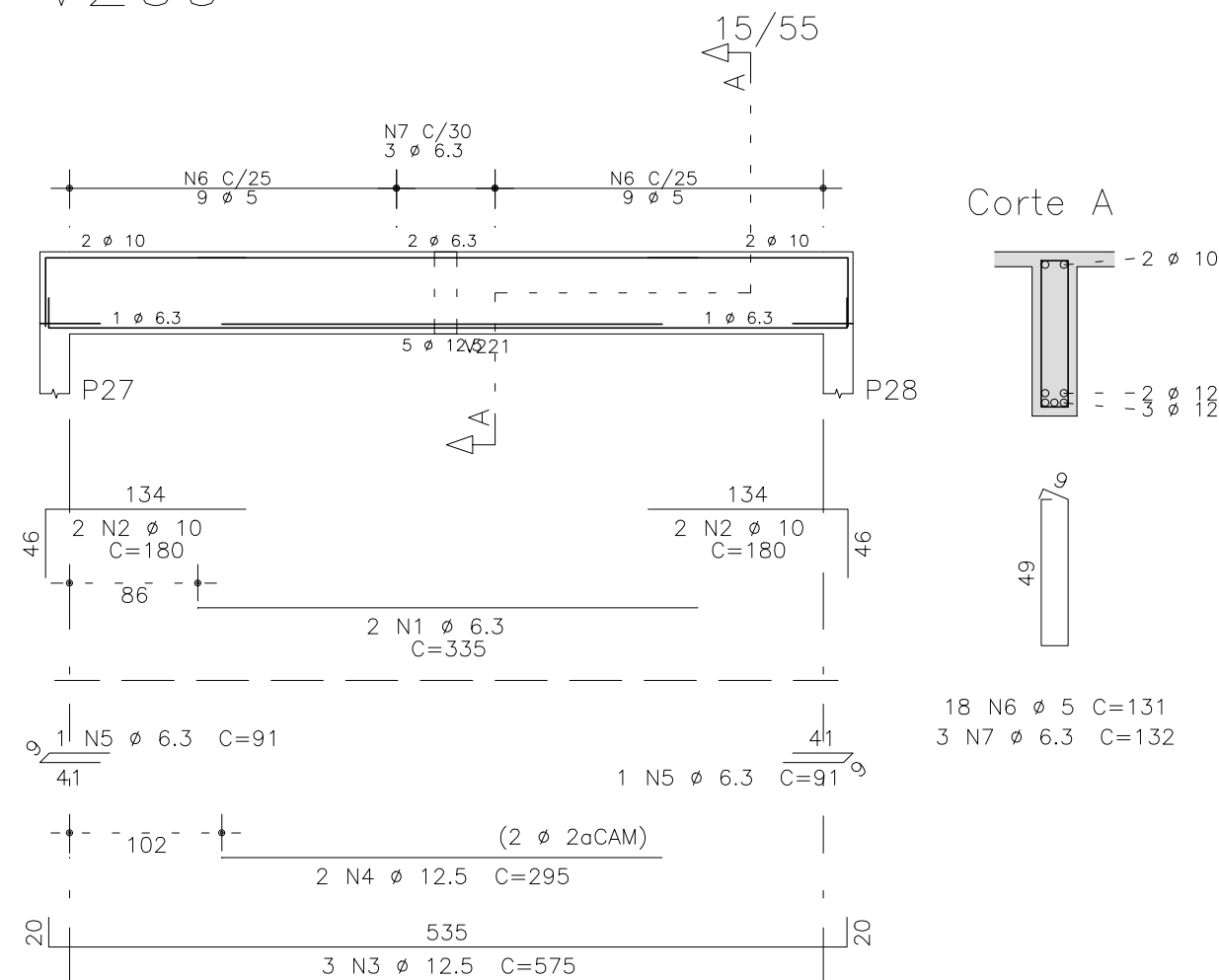
Corte B

V202



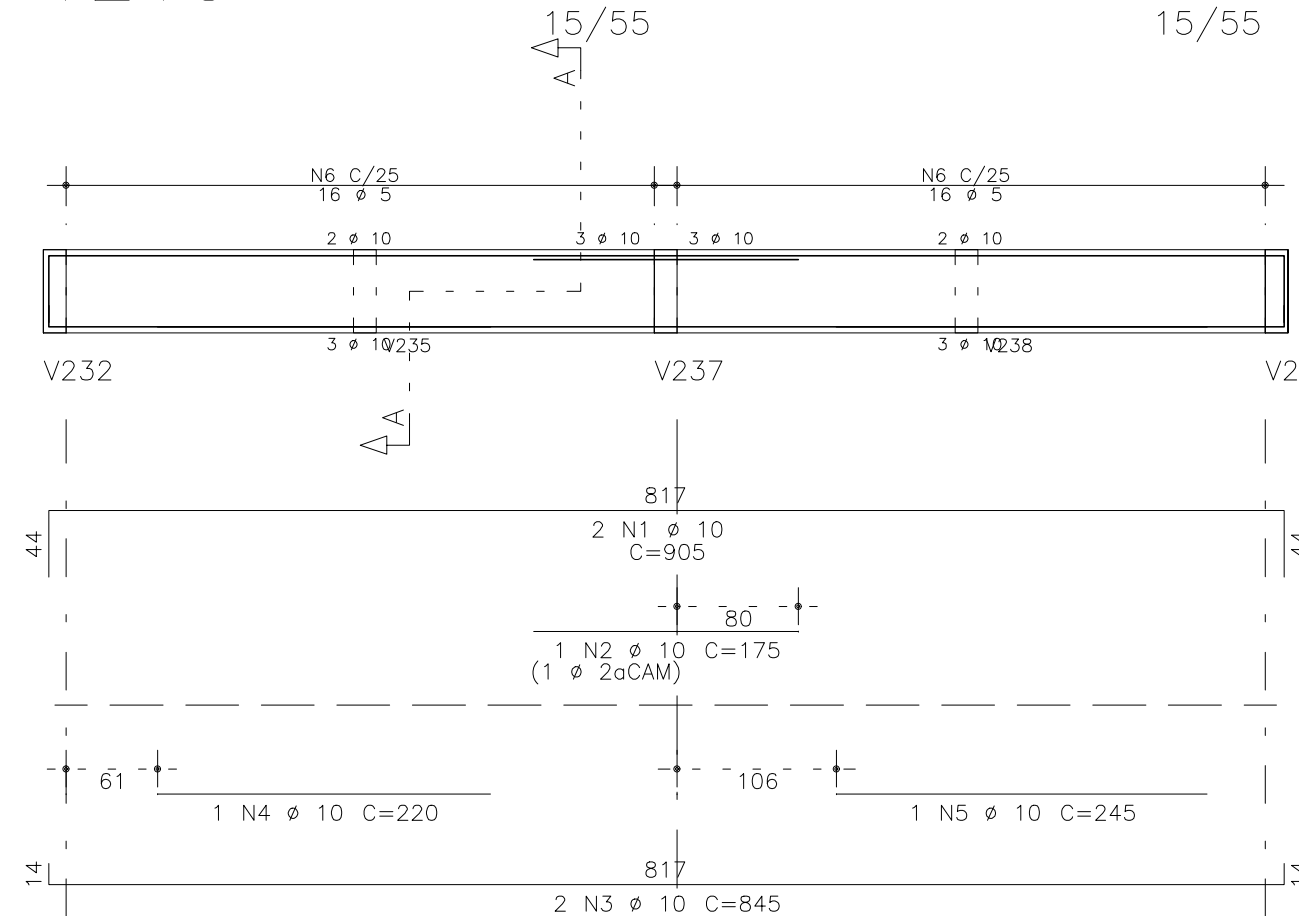
Corte A

V209



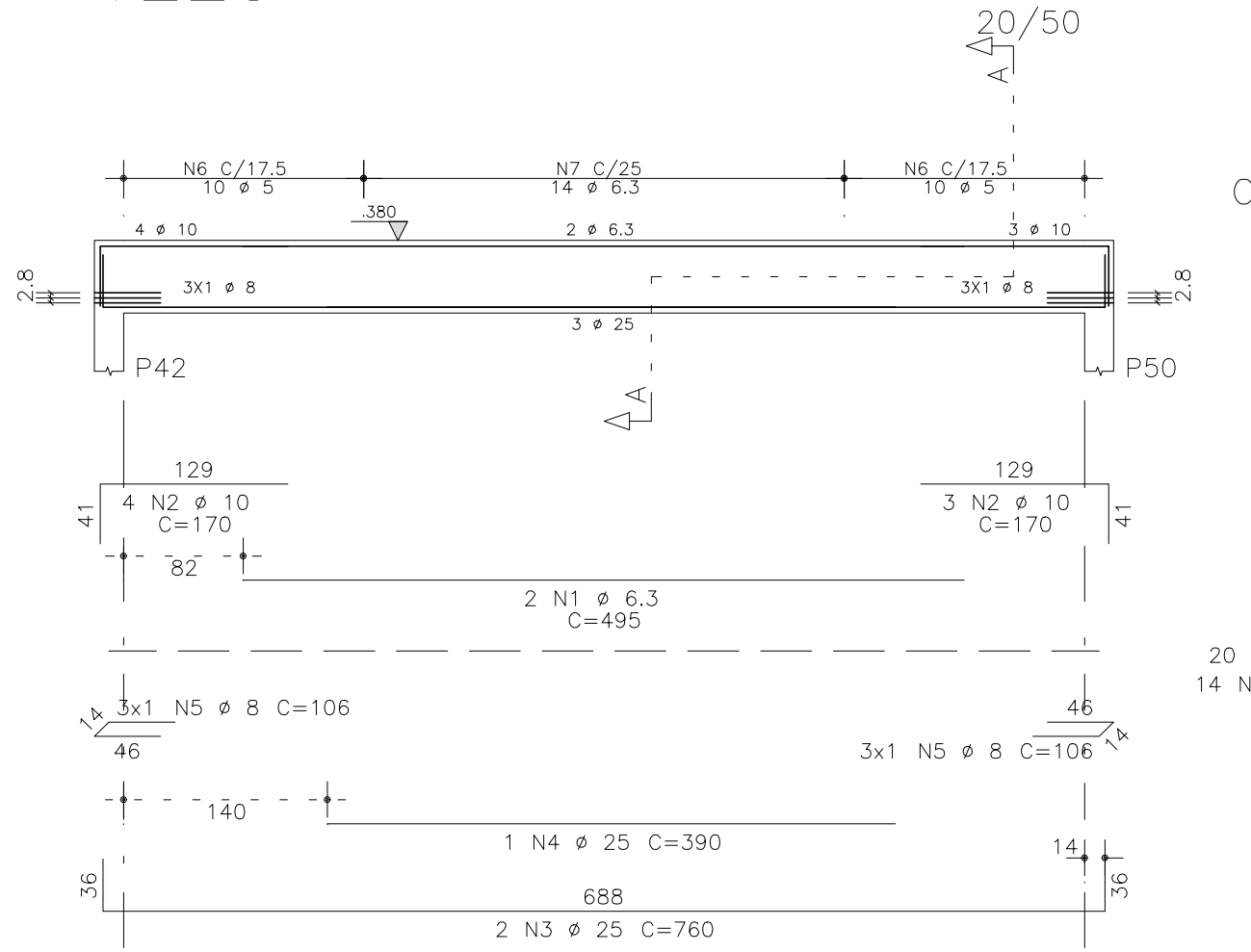
Corte A

V213



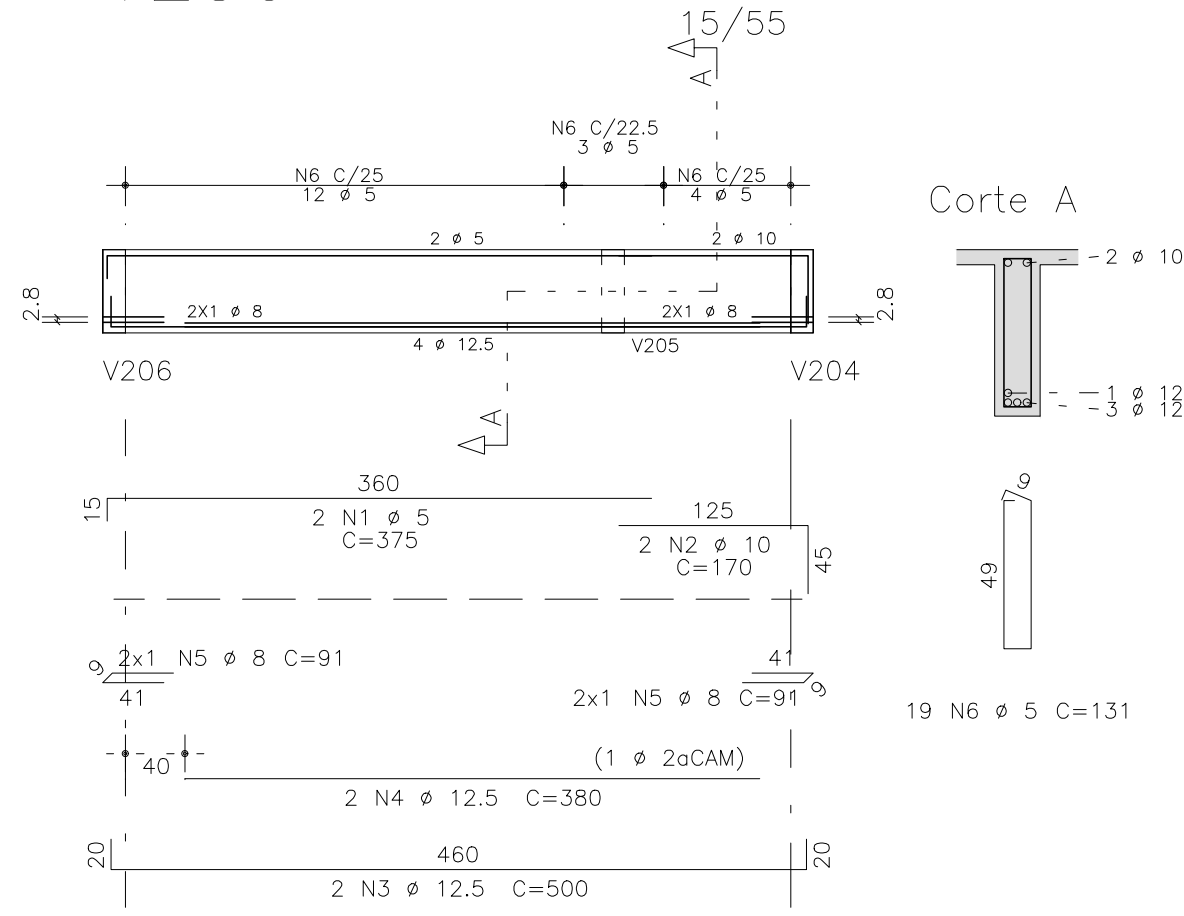
Corte A

V225



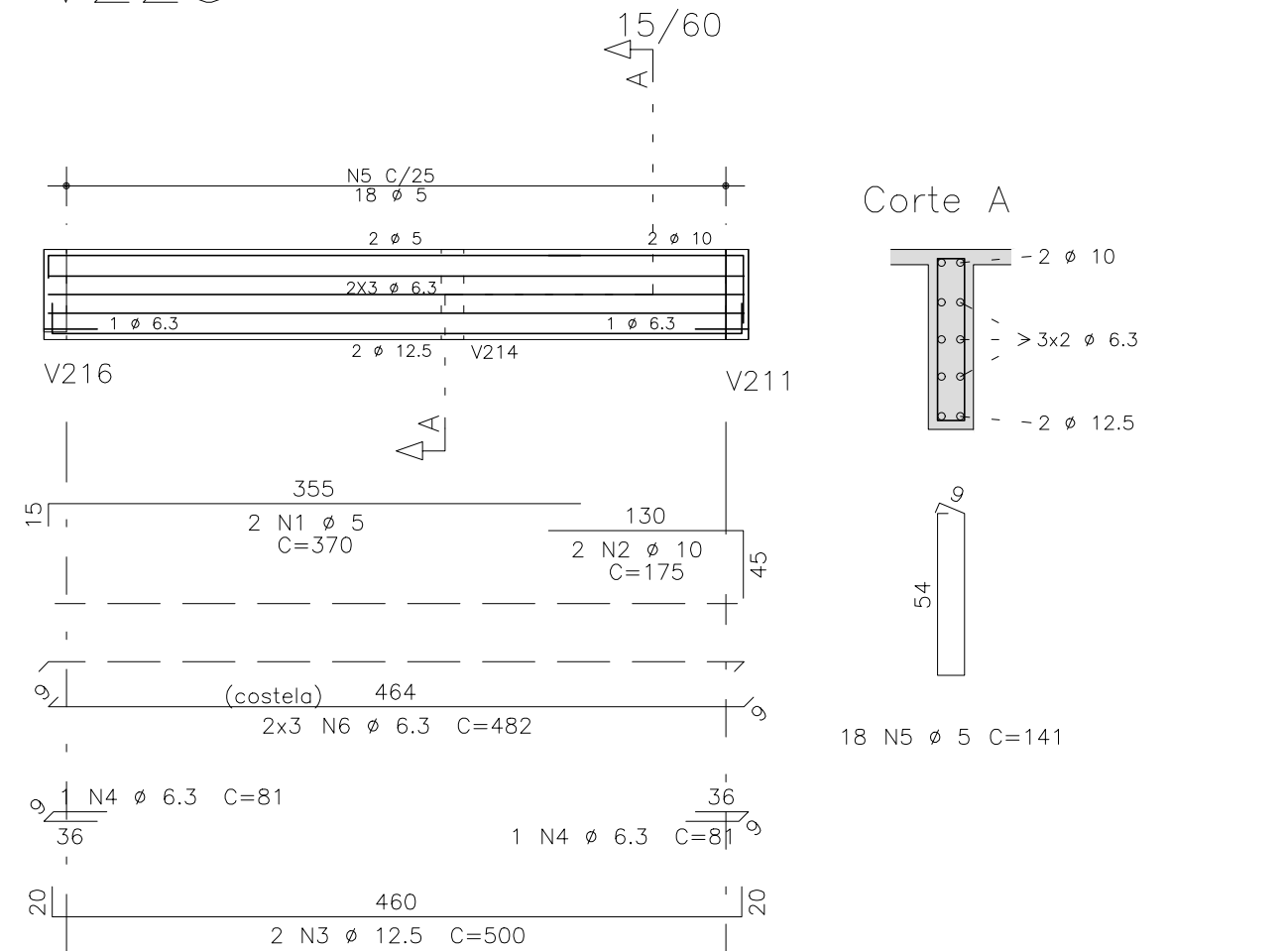
Corte A

V230



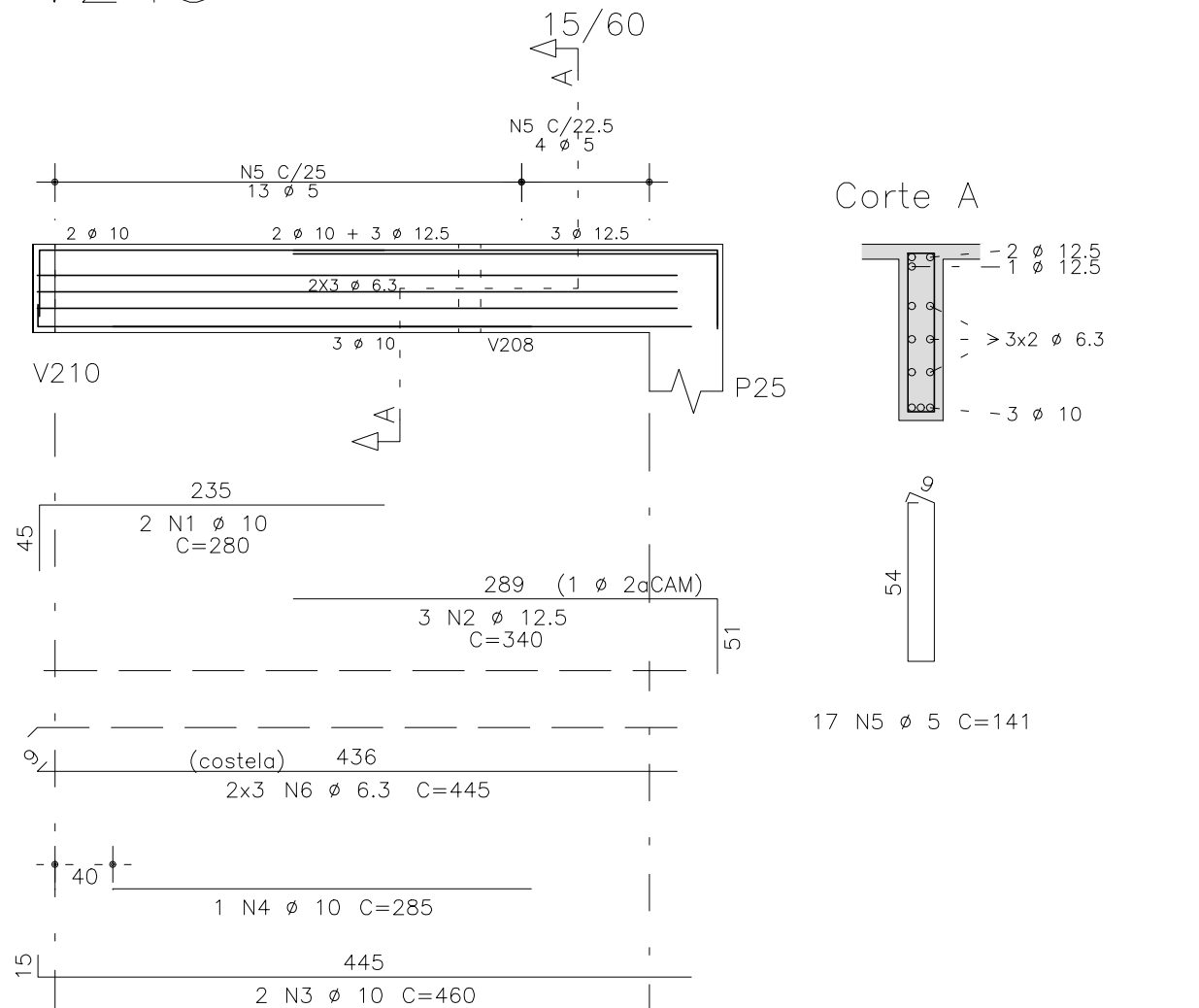
Corte A

V220



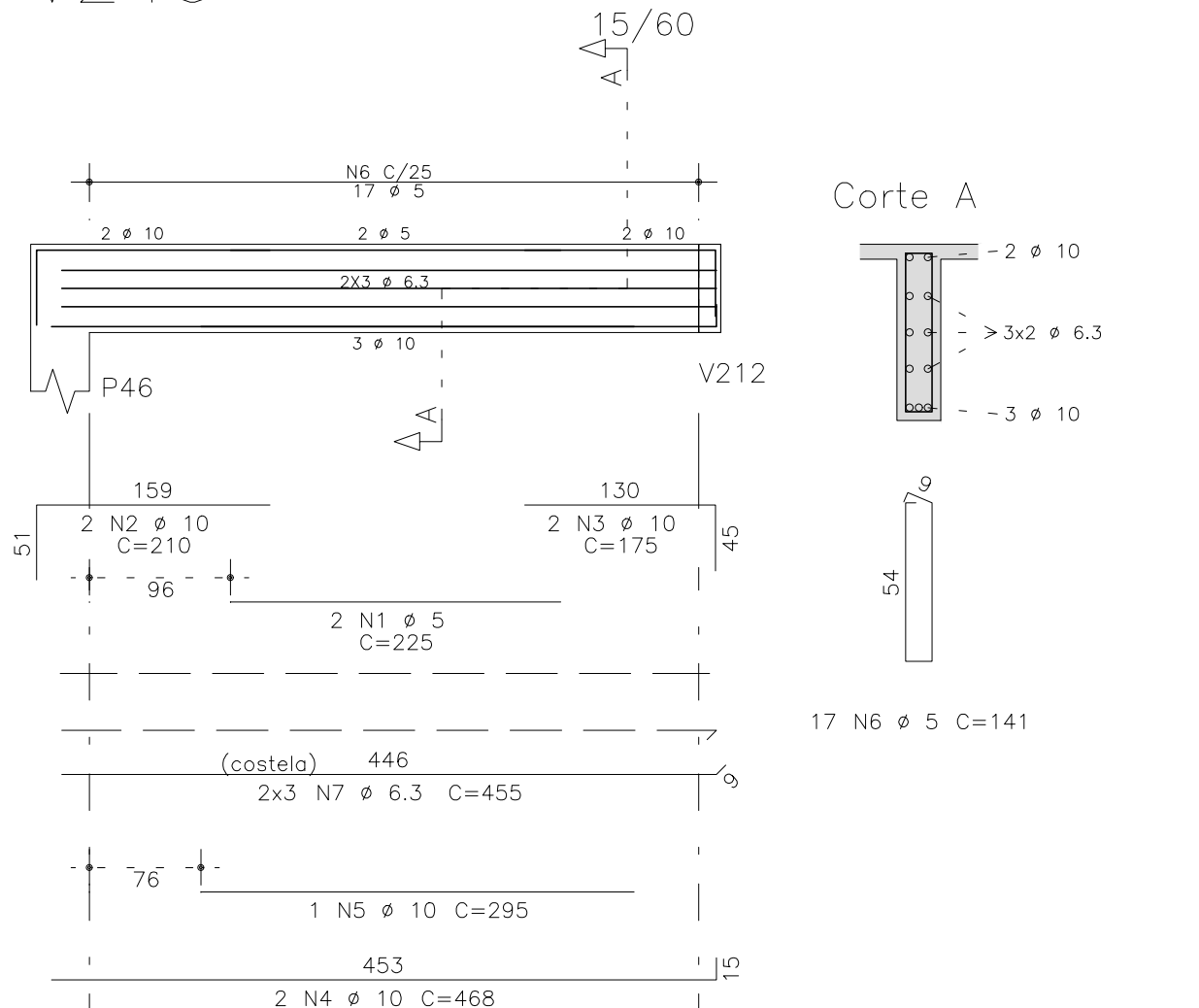
Corte A

V243



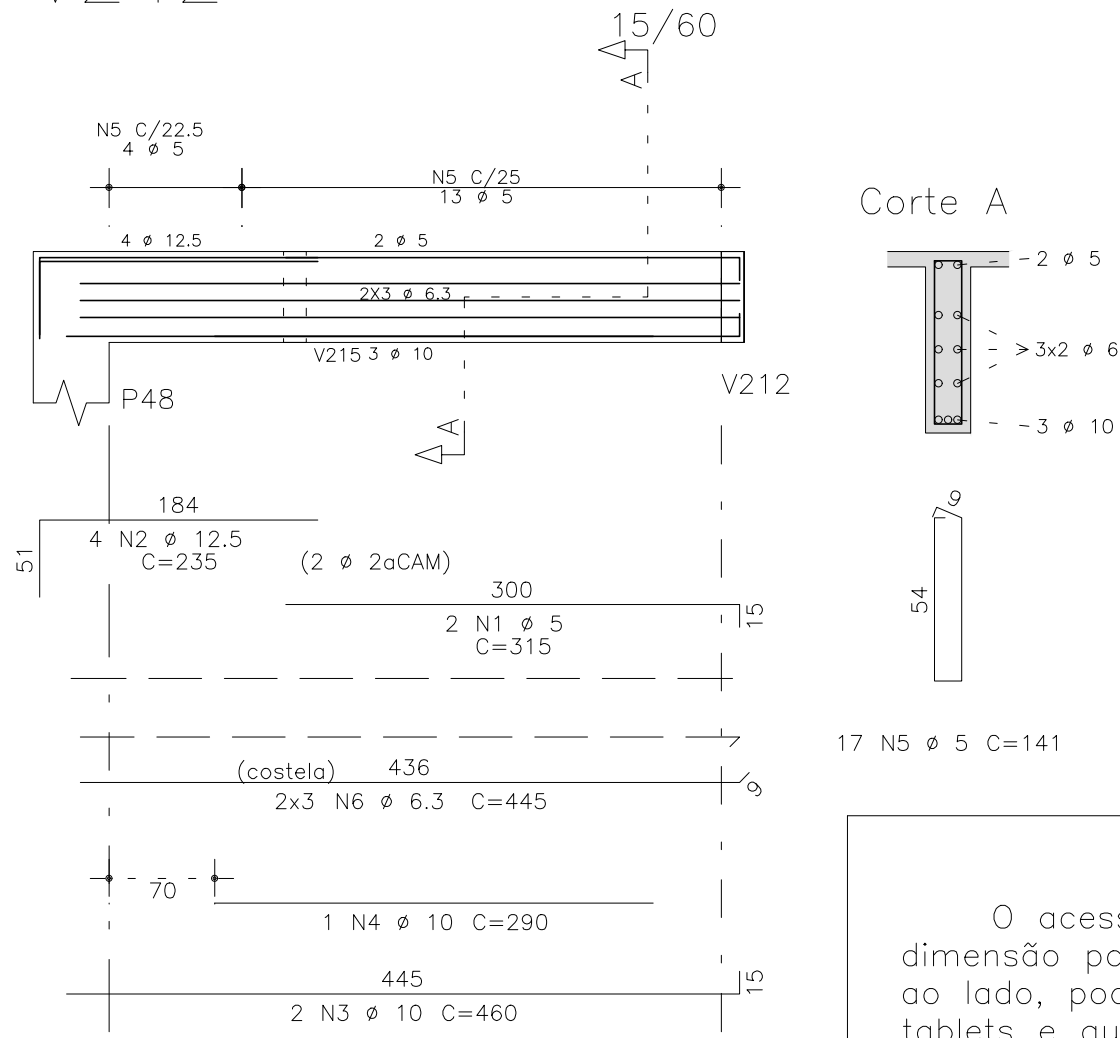
Corte A

V240



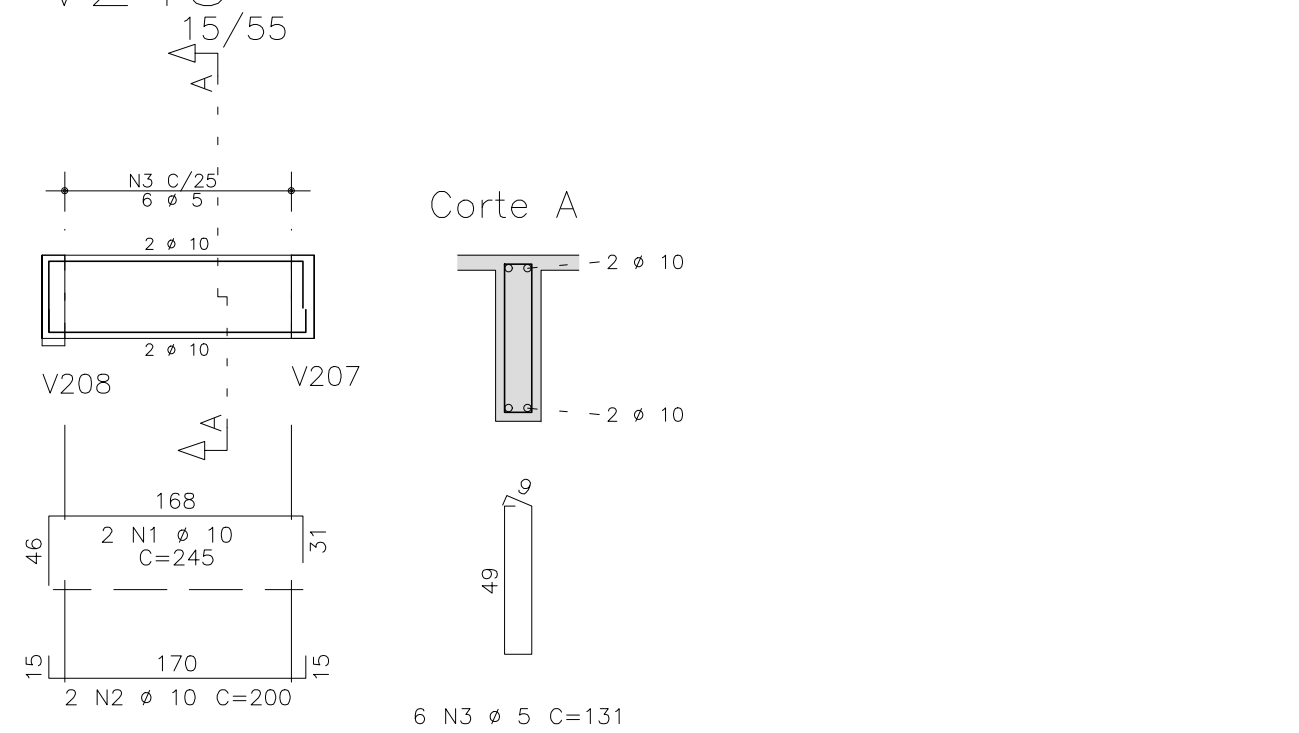
Corte A

V242



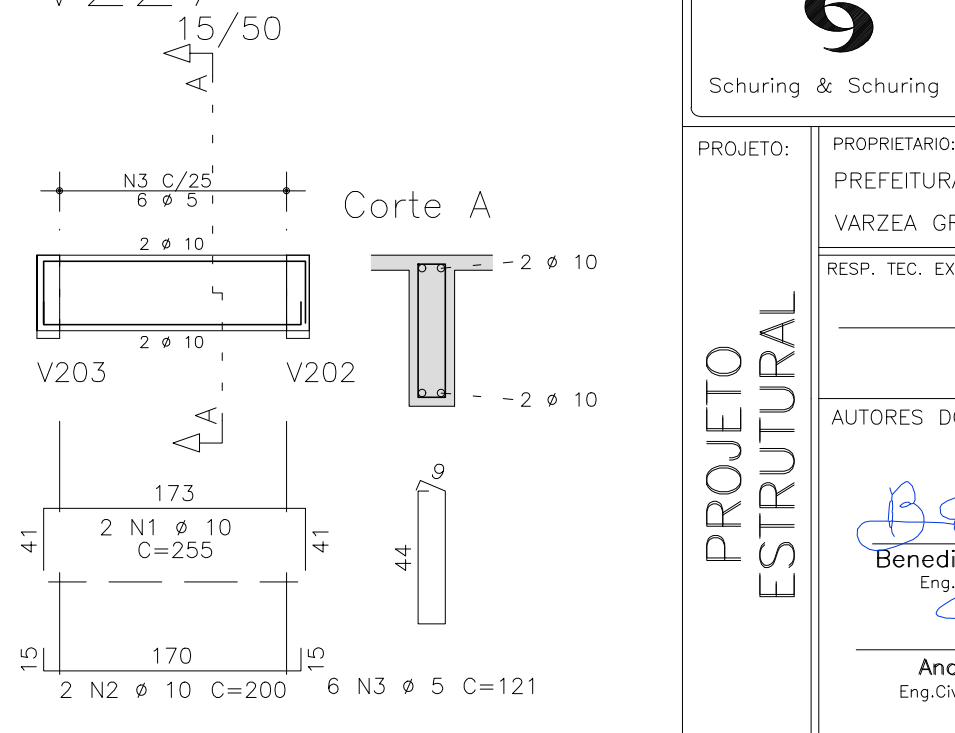
Corte A

V245



Corte A

V227



Corte A

	AÇO	POS	BIT (mm)	QUANT	COMPRIMENTO	
					UNIT (cm)	TOTAL (cm)
V202		1	10	2	260	520
	50A	2	5	2	280	560
	50A	3	12,5	2	420	840
	50A	4	12,5	1	200	200
	50A	5	10	2	845	1690
	50A	6	10	1	230	230
	60B	7	10	1	235	235
V209		8	5	32	131	4192
	50A	1	6,3	2	335	670
	50A	2	10	4	180	720
	50A	3	12,5	3	575	1725
	50A	4	12,5	2	295	590
	50A	5	6,3	2	91	182
	60B	6	5	18	131	2358
V213		7	6,3	3	132	396
	50A	1	10	2	905	1810
	50A	2	10	1	175	175
	50A	3	10	2	845	1690
	50A	4	10	1	220	220
	50A	5	10	1	245	245
	60B	6	5	32	131	4192
V220						
	60B	1	5	2	370	740
	50A	2	10	2	175	350
	50A	3	12,5	2	500	1000
	50A	4	6,3	2	81	162
	60B	5	5	18	141	2538
V225		6	6,3	6	482	2892
	50A	1	6,3	2	495	990
	50A	2	10	7	170	1190
	50A	3	25	2	760	1520
	50A	4	25	1	390	390
	50A	5	8	6	106	636
V226		6	5	20	131	2620
	60B	7	6,3	14	132	1848
	50A	1	10	2	210	420
	60B	2	5	2	210	420
	50A	3	12,5	2	360	720
	50A	4	10	3	200	600
V227		5	10	2	787	1574
	50A	6	10	1	260	260
	60B	7	5	30	131	3930
	50A	1	10	2	255	510
	50A	2	10	2	200	400
	60B	3	5	6	121	726
V230						
	60B	1	5	2	375	750
	50A	2	10	2	170	340
	50A	3	12,5	2	500	1000
	50A	4	12,5	2	380	760
	50A	5	8	4	91	364
V240		6	5	19	131	2489
	60B	1	5	2	225	450
	50A	2	10	2	210	420
	50A	3	10	2	175	350
	50A	4	10	2	468	936
	50A	5	10	1	295	295
V242		6	5	17	141	2397
	50A	7	6,3	6	455	2730
	60B	1	5	2	315	630
	50A	2	12,5	4	235	940
	50A	3	10	2	460	920
	50A	4	10	1	290	290
V243		5	5	17	141	2397
	60B	6	6,3	6	445	2670
	50A	1	10	2	280	560
	50A	2	12,5	3	340	1020
	50A	3	10	2	460	920
	50A	4	10	1	285	285
V245		6	5	17	141	2397
	50A	6	6,3	6	445	2670
	50A	1	10	2	245	490
	50A	2	10	2	200	400
	60B	3	5	6	131	786

RESUMO AÇO CA 50-60			
AÇO	BIT (mm)	COMPR (m)	PESO (kg)
60B	5	346	53
50A	6.3	152	37
50A	8	10	4
50A	10	190	118
50A	12.5	88	85
50A	25	19	74
Peso Total 60B =			53 kg
Peso Total 50A =			317 kg

O acesso ao Modelo Estrutural em dimensão pode ser executado pelo QR CODE ao lado, podendo acessar via celulares, tablets e quaisquer outros dispositivos.

Schuring & Schuring

Schuring & Schuring Ltda.

Escritório Técnico B.E.SCHURING – Projetos de Engenharia

Av. XV de Novembro, 489 – Porto Zo. Andar – Cuiabá MT

Fone:(065) 321 9959 – Fax:(065) 623 5066 – Email – schuring@terra.com.br

PROJETO:

PROPRIETÁRIO:

PREFEITURA MUNICIPAL

VARZEA GRANDE MT

RESP. TEC. EXECUCAO:

OBRA:

PREFEITURA MUNICIPAL DE

VARZEA GRANDE MT

Unid. Básica de Saúde

UBS–MATILDE CURVO DE MORAES

END.: Av. dos Bandeirantes.

Conj. Habit. José Carlos Guimarães, Varzea Grande–MT

AUTORES DO PROJETO:

Benedito Eliseu Schuring

Eng. Civil CREA 715/D–MT

Andre Luiz Schuring

Eng. Civil CREA 8697/D–MT

ASSUNTO:

COBERTURA

DET ARM VIGA

PEÇAS DETALHADAS

V202 / V209 / V213 / V220 / V225 / V226

V227 / V230 / V240 / V242 / V243 / V245

FCI:

ESCALA:

1:50

ARQUIVO:

DIREITOS AUTORES RESERVADOS

VERIFICAR MEDIDAS NA OBRA

DATA:

15/07/2019

FOLHA No.

23